



114 Burrendah Road
Jindalee QLD 4074
Subscribe: <https://jindaleess.schoolzineplus.com/subscribe>

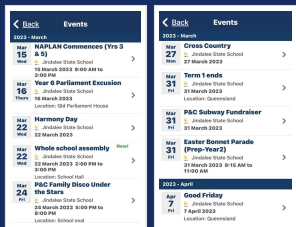
Email: info@jindaleess.eq.edu.au
Phone: 07 3725 5777
Fax: 07 3725 5700



Week 8 Term 1 2023 - 15 March

WHAT'S ON?

Check out our 'Calendar Events' snapshot from Qschools to see what's happening at JSS!



For the most up to date information, download the Qschools app directly to your device. See the JSS Info Point section of the newsletter for more details.

weeks of the school term, I look forward to continuing to collaborate and connect with the Jindalee SS community.

Teachers will be coming off class for a day of planning in year level teams in coming weeks, to ensure a consistent approach to teaching and learning is followed, for the term ahead. Mr Edgar, Ms Munker or myself will support Mrs Hammond in this whole school curriculum focus for Term 2, in these meetings.

Naplan

We wish our Year 3 & 5 student learners the best of luck as they begin their **NAPLAN testing period** today. NAPLAN is a national literacy and numeracy assessment that students in Years 3, 5, 7 and 9. NAPLAN is just one aspect of a school's assessment and reporting process. It doesn't replace ongoing assessments made by teachers about student performance, but it can provide teachers with additional information about students' educational progress. (<https://www.nap.edu.au/naplan/for-parents-carers>). Hopefully, a good night's sleep, a healthy breakfast and smile from Mum or Dad as our learners leave home will help our young ones, as per our normal school days.

Student Wellbeing Breakfast

PRINCIPAL'S NEWS

It is a privilege to be assisting the Jindalee State School leadership team, over the next few weeks of Term 1 to ensure the school community, staff and learners feel supported and valued, as we move into the Easter period.

I appreciate the staff, families and student learners I have met, who welcomed me so openly and warmly. My classroom visits have been very encouraging with classes showing how the school's values of **we are safe, we are respectful and we are a learner** are followed. As we progress through the last three

Student Wellbeing (supported by ICYS and P&C) will be providing a small breakfast to all Year 3 and Year 5 students completing Naplan, next Friday 17th March in the under cover area outside the admin building from 8.15am. Students need to have their name marked off and they will have the choice of chocolate, choc chip, blueberry or banana mini muffin and a range of juice poppers.

If your child has allergies or intolerances to certain foods please make them aware and have breakfast as normal at home.



Harmony Day 2023



Harmony Day is always an important day in a school's calendar acknowledging and celebrating our diverse community and nation. It is about inclusiveness, respect and a sense of belonging. A special school assembly is organised for Wednesday 22nd March to celebrate Harmony Day, at 2pm. **A sea of orange no doubt will fill the hall.**

P&C Family Disco

As a long-term resident of the Centenary suburbs myself, I have always observed Jindalee State School's P&C and community events as amazing, extra-special and well supported. I look forward to meeting and interacting with many parents and students at the Family Disco, on 24th March.

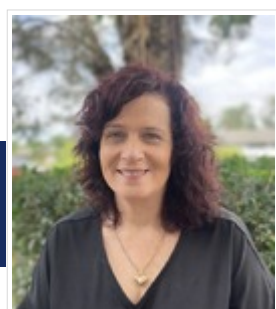


As a school leader, I have always valued the importance of making connections with all community members of my school-families, staff and learners. As we move through the remainder of the term, I hope to make such connections with many of you - ensuring a consistent and collaborative approach to leading the Jindalee SS community continues.

'A good leader knows the way, goes the way and shows the way.' (John C. Maxwell).

Natala Crawley

Acting Principal



**HARMONY DAY - 22
MARCH 2023**



Wednesday 22 March is Harmony Day at JSS.

Our diversity makes Australia a great place to live. Harmony Day is a celebration of our cultural diversity – a day of cultural respect for everyone who calls Australia home.

On Harmony Day students are encouraged to wear an orange t-shirt with their blue school shorts/skirts/skorts to show their support for cultural diversity and an inclusive Australia. Orange is the colour chosen to represent Harmony Week because traditionally orange signifies social communication and meaningful conversations.

We will hold a whole school assembly at 2pm on Wednesday the 22 March, which will include a choir performance. During the week classes will have the opportunity to participate in Harmony week activities.

Many thanks,

JSS Harmony Day Committee

EASTER BONNET PARADE - 31 MARCH 2023

Our annual JSS Easter Bonnet Parade will be held on Friday 31 March (last day of Term 1) from 9.15am. Parents and carers are invited to watch as students from Prep to Year 2 parade around the school to show off their Easter themed bonnets/hats/ears.



Please note - Easter bonnets/hats/ears are to be made at home - they are not made in class. Please ensure they are easy to wear and manageable for your child.

Our procession will begin at 9:15am, with students parading around the school before heading down to the hall where they will participate in some Easter Songs. There may even be a visit from a special guest ,?..?!.

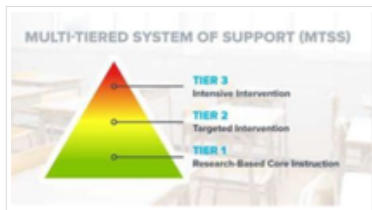
Thank you for supporting your child with making their bonnet or ears at home. We look forward to seeing them on the last day of term.

HEAD OF INCLUSION NEWS



The Whole School Model of School Support

Along with our team of Inclusion Teachers and Teacher Aides at Jindalee State School we have a multi-disciplinary team and specialists that support our students.



Our Class and Inclusion Teachers access these specialists through our Whole School Model of School Support that involves a Tiered level of support (Tier 1 – Quality Differentiated Teaching/Research-Based Core Instruction, Tier 2 – Focussed Support/Targeted Intervention & Tier 3 – Intensive Support/Intervention).

Some of the specialist staff include:

- **GUIDANCE OFFICER – Maria Manson –**
Monday, Thursday and Friday

Our Guidance Officer participates in Tier 3 collaborative teams from which a specific referral is made for individual Guidance Service case involvement. There are occasional times where the request for service occurs outside this process. Guidance Officer role and responsibilities include:

- Informing parents of request for service and specific involvement (eg observe, implement, analyse, report and counsel) and gain signed consent.
- Conduct developmental screening and psychoeducational assessments (intellectual and academic achievements) to help understand child's learning and behavioural profile.
- Communicate to parents and educators, and inform educational and behavioural interventions, adjustments and NCCD procedures. Student advocacy.
- In partnership with parents, initiate, maintain and promote multi-agency and multidisciplinary relationships (eg Paediatricians, Qld Health Services, private therapists etc) and collaborate to inform program interventions.

- Respond to development of school wide and student well-being / mental health interventions.
- Provide information to teachers and parents to address social and emotional needs of students and provide small group / individual counselling and group implementation of social skills support and programs.

- **EDUCATION QLD SPEECH LANGUAGE PATHOLOGIST – Chelsea Palmer – Monday**

Our Speech language pathologist (SLP) support teachers to make reasonable adjustments for students who have difficulties with speaking, listening, reading and writing. They work with Education Teams to identify and make adjustments to the curriculum and provide strategies for teachers to use. SLPs may use a mix of services which can include advice for teachers and parents, input to curriculum and programming, assessment, individual and group therapy and parent, teacher or teacher aide programs.

- **STUDENT WELL BEING WORKER – Sheryl Pascoe – Tuesday and Friday**

Our Student Wellbeing Worker supports students with their social and emotional skills by:

- Assisting students to develop knowledge, understanding and skills that support learning, positive behaviour and constructive social relationships
- Acting as a role model for students to assist in the development of supportive relationships for, with, and among students
- Assisting with classroom activities (under the direction of a teacher) where involvement provides further social or emotional support for those students who may be at risk of disengagement
- Delivering group work such as Friendship & Social Skills Groups
- Providing a safe space for students to discuss any concerns they are having
- Providing safe and interactive activities at breaks for students who would benefit from having a quiet space away from the play areas

- **EDUCATION QLD OCCUPATIONAL THERAPIST - Liz Halloran - & PHYSIOTHERAPIST – Jane Murphy – visits when required**

Our Occupational Therapist and Physiotherapist work in Queensland State Schools supporting students with disability to achieve the best outcomes from their education. They help students to access and participate in learning and school activities. They assist schools

to make adjustments to enable students to engage in learning, achieve and belong in the school. Occupational Therapists and Physiotherapists often work as a team. Each offers something different, however both professions work with school teams, including students and their parents or carers, to make changes to the environment and equipment used, as well as support students to learn and practice new skills.

Occupational Therapy and Physiotherapy services are based on the needs of each student and the goals set by school teams. They work with school teams to make adjustments to:

- how students are taught (the teaching process, learning activities and routines)
- how students show what they have learnt
- learning environments.

Services may include:

- providing information or coaching staff to build their skills, plan and solve problems
 - supporting the use of and advising on assistive technology, equipment or other personalised resources
 - changing students' learning activities or classroom environment
 - supporting students to participate in school activities
- EDUCATION QLD ADVISORY VISITING TEACHERS (AVTs) – AUTISM – Belinda MacDonald , HEARING IMPAIRMENT – Trish Taylor, PHYSICAL IMPAIRMENT – Debbie Hardy AND VISION IMPAIRMENT – visits when required

Advisory Visiting Teachers are departmental teachers with specialist knowledge and skills in the following disability areas – Autism, Hearing, Physical & Vision Impairment. The main role of the AVT is to support school staff to make reasonable adjustments to support the student's education program so they access, participate and achieve.



If you have any queries, please don't hesitate to contact me.

Tahlee Delaforce-Turner

Head of Inclusion

tdela57@eq.edu.au

ELEARNING NEWS

Where did all the time go? We are now in Week 8!

QParents

Thank you to the amazing families who have registered for QParents and are benefitting from the timesaving convenience of this app. Also, thank you to the families who continue to provide feedback regarding their use of the app.



Presently we have 56% of our students connected via QParents. Remember, our goal is to have at least 80% (90% would be ideal) of students connected to families on QParents. When we reach the 80% we will start using the excursion consent module. What this means for families is they will be able to provide consent for excursions via the app (like the Online Services Consent survey), rather than looking for sheets of paper in your child/ren's bag.

So far, the year level to beat are our Preppies with 71.4% of families connected to QParents.

Prep	71.4
Year 4	63.2
Year 2	59.3
Year 1	57.4
Year 3	56.0
Year 6	55.4
Year 5	44.8
Total	56.0

BYOD and NAPLAN

Last week I visited all of our Year 3 and 5 students to confirm they are comfortable with their BYO device, are setup with Intune, and are ready for this week's NAPLAN. Unfortunately, we still had a few students who did not have a laptop with them (they forgot or it wasn't fully charged at the beginning of the day). As our students are young and are always learning, we need to support them daily, to ensure they have a complete tech kit every day. A complete tech kit includes a **fully charged** laptop (Years 4-6) or iPad (Years 2-4) and a headset in a protective carry case. (Students may choose to bring a stylus, mouse or Bluetooth keyboard.)



A huge, thank you to the families who have supported their child/ren in getting their BYO device ready for their learning. We know it's not an easy task each year. If you are still having difficulties with setting up your child/ren's BYO device, please contact eLearning@eq.edu.au and we will provide you with the support you need; we will even schedule time with our onsite technicians to support you with the 'techie' side.

Student Clubs

Every week we have the following technology based clubs...

- Monday – second break (1pm) – Minecraft Builders – Years 3-6
- Tuesday – second break (1Pm) – Junior Coders – Years 2 and 3

To participate in these clubs, students must adhere to our BYOD Participation Agreement.

ATTENTION Families in Prep, Year 4 and new families!

Have you completed the Online Services Survey in our QParents app?

We can't let them use Mathletics, Reading Eggs/press or Mathseeds without your consent!

P&C NEWS

Family Disco Under The Stars - 5-8pm Friday 24 March

Let's celebrate all that's great about Jindalee SS with a Family School Disco under the stars. Grab your dancing shoes and get ready to dance the night away at the school disco on the 24th March 2023. Bring your picnic blankets/chairs and join us from 5-8pm on the school oval for an evening of food, dancing and catching up at our first social event for the year.



- Food trucks for dinner
- Face painting
- A bar for adult refreshments
- A DJ will be playing music for dancing on the oval
- Raffle prizes
- A fireworks display to light up the night sky! :)

Please note - this is not a children only disco this is a family fun event and children are to be accompanied by an adult and not to be dropped off on their own as there will be no school staff supervision on site. This is a fun family event for all to enjoy as a community! Playgrounds will also be out of bounds at the event.

We hope to see you there!

If you can volunteer and help on the afternoon/ night please see the link below we would really appreciate any help possible to make the night a great success! :)

www.jssdiscovolunteerregister.com

Subway Meal Deal - Friday 31 March - Last day of school term 1

To celebrate last day of term 1 we thought we would organise a subway meal deal for the children and staff to help fundraise towards the school.

To order please follow the link below or scan the QR code listed on the flyer. Thank you :)

<https://myschoollunch.com.au/jindalee-ss-traffic-selector>

If you can please help volunteer in the morning please email: operations@jsspandc.com.au



PAL Network

In 2023 we are very excited to bring back our PAL initiative back to our school.

We are all about connecting children and families together and building a positive happy community and caring connections that allow you to grow together within your class communities as a whole.

To make this happen for your class we are looking for a class PAL parent leader in your class to connect and build the class community

If you would like to be your child's class parent representative please speak with our team by emailing jsspals@jsspandc.com.au

If you have already put your hand up to be your class representative you will be contacted soon by one of our coordinators.

Here are a few things you will need to know listed in the flyer below:

Class Parent Representative

CONNECTING CHILDREN & FAMILIES TOGETHER

We are currently seeking a parent to be the Parent and Liaison (PAL) for your child's class.

Connecting Families Together

Our PAL network is being set up to ensure that each class has a representative to share information that is relevant to your class with each family in the class.

Each PAL will have a slightly different experience, but things that might be included in this role:

- Distribution of information to all families in your class for P&C events and fundraisers
- Coordination of support and special assistance to families going through a tough time - meals, uniforms, etc
- Planning and coordinating with volunteers from your class/year level for school events - each year level will be asked to assist with organising a event throughout the year.
- Organizing class social events - catch up coffee's/play in the parks, parent dinners etc (one per term).
- Helping the classroom teacher with parents to help with special projects, classroom activities - (as requested depending on the teacher's requirements).

Work With Us:

If you would like to volunteer to be the class PAL for 2023 and help build your class and school community, please email your name and class details to: jsspals@jsspandc.com.au

JSS P&C
Jindalee State School
Parents and Citizens

2023 School Fete

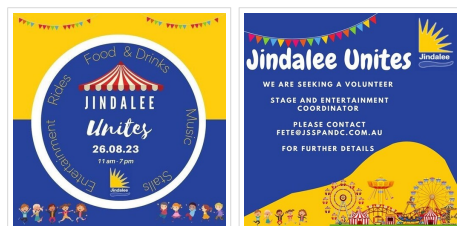
The Jindalee State School Fete is returning on Saturday the 26th August 2023!

Our events team are busy organising the event and excited to be bringing back our big fete this year.

The Fete Executive coordination team is seeking a volunteer for the role of - **stage and entertainment coordinator**.

This role will look after sourcing and programming the performances on the main stage.

If you are interested in helping make this fete the best event it can be, please get in touch via fete@jsspandc.com.au



P&C Meetings

If you want to have your say on future school community events, know how we support the school, families and community or are simply interested to see how the Jindalee State School P&C works or what we do, then we would love to see you join us at our next P&C meeting.



The 2023 AGM will be held at 6:00pm on Monday 27 March followed by the general P&C meeting at 6:30pm.

All staff, parents and citizens of the JSS community are invited to attend.

Our P&C at Jindalee State School is a positive and productive group of people working together and we are always looking for new members to bring new ideas and skills to benefit our school.

If you are interested in finding out more, please email operations@jsspandc.com.au - we can't wait to hear from you!



Year 6 Senior Winter Jackets

FINAL REMINDER - 2023 Year 6 Senior Jacket orders due by FRIDAY 17/3/23

This is a final reminder that all orders for 2023 Year 6 Senior Jackets must be placed and paid for through www.quickcliq.com.au by Friday 17th March 2023. Jackets are available for \$45 each. Orders will not be taken after that date and there will be no spare Year 6 Senior Jackets available to purchase. Try on jackets are available in the Year 6 area. Jackets will be ready to hand out to students at the beginning of Term 2.

Please contact Ann in the Uniform Shop at uniformshop@jsspandc.com.au if you have any questions.



Email: uniformshop@jsspandc.com.au

Shop: 3725 5715 (during opening hours only)

Hours: Tuesday & Thursday 8:30am - 9:30am

<http://www.quickcliq.com.au>



Our Slush Puppie has been very popular amongst the children.

Please note: there may be a longer wait time in line for the slush puppie due to high popularity.

Available for purchase over the counter and online for second break. 1 per person.



SLUSH PUPPIE has been focusing on launching a new range of Flavours specific for the School and Leisure channels. Our 100% Apple Juice and 8 Natural Flavours have been specifically designed to meet the criteria of healthy kids Australia. This new range has NO artificial colours or Flavours, NO MSG, and NO added sugar. With an ever growing demand for a healthier option, SLUSH PUPPIE is dedicated in providing young kids and healthy conscious adults a delicious Slush.



Pricing:

Small \$2.00

Medium \$2.50

PLEASE ENSURE YOUR ORDERS ARE SUBMITTED
BY 8AM as food preparation begins at this time.

Please do not call the shop to place a phone order to place an order after 8am - we can not guarantee that these orders will be accepted.

The Jindalee Snack Shack (tuckshop) operates Monday to Friday for first and second breaks and in 2023 will continue to accept online orders only via www.quickcliq.com.au to minimise cash transactions. No over the counter orders will be taken before school, to minimise social interactions, however, snacks (ice blocks, popcorn etc will continue to be available for purchase during second break).

When placing an order, please remember:

- Orders can be placed until the cut-off time of 8am on the day of ordering and can also be made for up to two weeks in advance.
- Phone orders will not be accepted.
- An orange dot means an item needs to be collected from the Snack Shack.
- Please let your children know that if anything is missing from their order to come and see us at the Snack Shack.

Please see below for our menu. This menu is subject to change based on product availability. If you can not find a regular item (eg particular type of ice block), it may mean our suppliers are having issues providing us with stock or we simply do not have the capacity to deliver this item - the menu will be updated according to availability.

https://jindaleess.schoolzineplus.com/_file/media/760/2022_tuck_shop_menu_.pdf

Email: tuckshop@jsspandc.com.au

Phone: 3725 5719

Hours: Monday - Friday 8:30am - 1:30pm

<http://www.quickcliq.com.au>

Nominate JSS P&C to receive your funds from recycling when you take your bottles and cans to a recycling centre. Simply enter our Scheme ID: C10424145 or scan the QR code below:



Entertainment Book Memberships



You can now order online - memberships are valid for 12 months from activation (you have 3 months to activate). Simply purchase your package and download the app to instantly access substantial savings across dining,

shopping, travel, car hire and more, with new offers being added weekly, for ongoing value all year round.

Click the link below to get your new Entertainment Membership today and support Jindalee State School P&C - 20% of each sale will go towards our P&C funded projects! If you have friends and family interested in purchasing memberships, please send them this link so they too can support our school!

<https://www.entertainment.com.au/orderbooks/225x456>

PREP 2024 ENROLMENTS

Containers for Change





QSchools

All Department of Education schools provide their school community free, direct access to the school's website and essential communications via the QSchools app.

The Qschools app allows users to:

- find and favourite multiple schools
- receive real-time notifications about state-wide emergency alerts as well as school push notifications

QSchool users will be able to:

- access the latest news, events and newsletters
- the school calendar
- easily access tuckshop and uniform shop information
- view information about schools, including class times and contact details
- view any social media feeds.

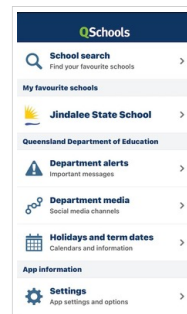
The app can manage updates from multiple schools which is useful for families who have students in different schools.

QSchools is available for free download - click to download your preferred platform:

[Windows](#)

[Android](#)

[Apple](#)



SUBSCRIBING TO THE NEWSLETTER



The Jindalee State School newsletter is produced every fortnight during the school terms (beginning week 2). It is the best way to stay up to date with what is happening within our school community.

If you would like to have the newsletter automatically sent to your email each

fortnight, please subscribe via the link below:

<https://jindaleess.schoolzineplus.com/subscribe>

JSS INFO POINT

The JSS Info Point is your 'go to' reference zone for details on school policies, procedures and need to know info.

QSuite

QParents

QParents is a user-friendly portal accessible via app or web browser, providing parents with secure online access to information about their child's state schooling.

QParents allows you to access and manage information online about your child.

You can access information about:

- attendance details
- timetables and upcoming events
- report cards and assessments
- invoices and payment history.

To register, you will need:

- your unique invitation code sent to you by your child's school
- an active email account
- each child's EQ ID number
 - *Your child's EQ ID number can be located on an invoice you have received from us. It appears next to their name.*



- 100 points of ID to verify your identity.

Please email learning@jindaleess.eq.edu.au for a parent invite request to register for QParents.

For more details and a list of documents you can use to verify your identity online see the [Registration fact sheet for parents](#).

Further information is available here:

- [QParents help page](#)
- [QParents fact sheet for parents](#)
- [Watch the QParents overview video](#)

School Procedures

The Stop, Drop & Go Zone

Please note the following when you are using the Stop, Drop & Go Zone on Wongaburra Street:

- It is a 2 minute only zone.
- Drivers must stay with their car.
- It is a stop, drop and go zone, **not a parking zone**.
- Please move to the front of the zone if/when space becomes available.
- In the afternoon, the orange cones at the entrance will be removed at 3:10pm so cars can enter the zone – this is so that our students have adequate time to leave their classrooms and walk up to the zone.
- Please **DO NOT REMOVE THE CONES** and/or enter the zone before 3:10pm.

It is important that we use this area correctly to ensure the smooth flow of traffic. To assist with the 'stop, drop and go', especially in the mornings, it would be beneficial for children to have their bags, belongings, homework, notes, hair done, shoes on etc. ready to go and organised so that when you stop, children can get out quickly and safely.

We understand that there are some parking issues around our school, however if we are using the parking and the stop, drop and go areas correctly, this will assist us with a smoother and less stressful morning and afternoon.

Sick Students

It is absolutely vital, that if your child is sick, they must remain at home.

Student Absence Notification Process

Please remember to call the school on 3725 5777 and leave a voice message (option 1), or email absent@jindaleess.eq.edu.au early in the morning if your child is going to be away, or late for school, so your child's absence can be recorded correctly.

Please ensure you state very clearly:

- Your name and contact number
- Child/rens name

- Reason for absence (ie> illness, holiday, appointment, etc)
- Duration of absence

Financial Procedures

No cash payments are accepted. All payments can be made via QParents/BPoint and EFTPOS through the office payment window (Monday - Friday, 8:30am - 10:30am).

QPARENTS - Please refer to this section on the newsletter for further details on setting up this app.

BPOINT is an online payment system and is the **preferred payment method (along with QParents)**. This option is accessed through an internet weblink which appears on all invoices and statements.

When making payments via BPoint from the invoice or statement, please ensure to enter each payment separately using the invoice number and amount.

Payment will not clear if entered any other way.

Please be mindful when paying via BPoint for overdue invoices, as payments may take 48 hours to register in the system. To avoid any confusion, we strongly recommend you pay before the due date. We also encourage you to take a screenshot of the receipt and email to info@jindaleess.eq.edu.au.

If you are expecting an invoice for an excursion/incursion/camp or other school related program, please check your "Junk/Spam Folder" or search your emails for "@eq.edu.au". Invoices are emailed on the day of/or day after circulars are handed to students. If you still cannot locate the invoice and need another copy, please email us on info@jindaleess.eq.edu.au or call 3725 5777.

NB: Our system can only allocate 1 parent/carer per household to receive invoices/statements (unless your children live between parents/carers - then we can split invoices 50/50 - on request only).

2023 Student Resource Scheme have been issued to those families who have returned the SRS Agreement form. This form is only required to be filled in once for each student's attendance at Jindalee State School.

We appreciate payment of these as soon as possible.

P&C Services



JINDALEE P&C SERVICES

SNACK SHACK Email: tuckshop@ssqandc.com.au Phone: 3725 5719 (during opening hours only) Hours: Monday - Friday 8:30am - 1:30pm Order Online: www.quickclip.com.au	UNIFORM SHOP Email: uniformshop@ssqandc.com.au Phone: 3725 5715 (during opening hours only) Hours: Tuesday & Thursday 8:30am - 9:30am Order Online: www.quickclip.com.au
---	---

SCHOOL AGE CARE PROGRAM

 Email: admin@jindaleesacp.com.au Phone: 0421 787 789 Hours: Before School Care: 6:30am-8:30am After School Care: 3:00pm-6:00pm Vacation Care: 6:30-6:00pm www.jindaleesacp.com.au	
---	---

https://jindaleess.schoolzineplus.com/_file/media/1307/2023_tuckshop_menu.pdf

https://jindaleess.schoolzineplus.com/_file/media/965/uniform_price_list_2022_2_.pdf

COMMUNITY NEWS

https://jindaleess.schoolzineplus.com/_file/media/1317/centenary_netball_club_2023.pdf

https://jindaleess.schoolzineplus.com/_file/media/1318/2023_school_flyers_term_1.pdf

[Privacy Policy](#) | [Cookie Policy](#)